

# SC Department of Natural Resources and Marine Mammals



DNR

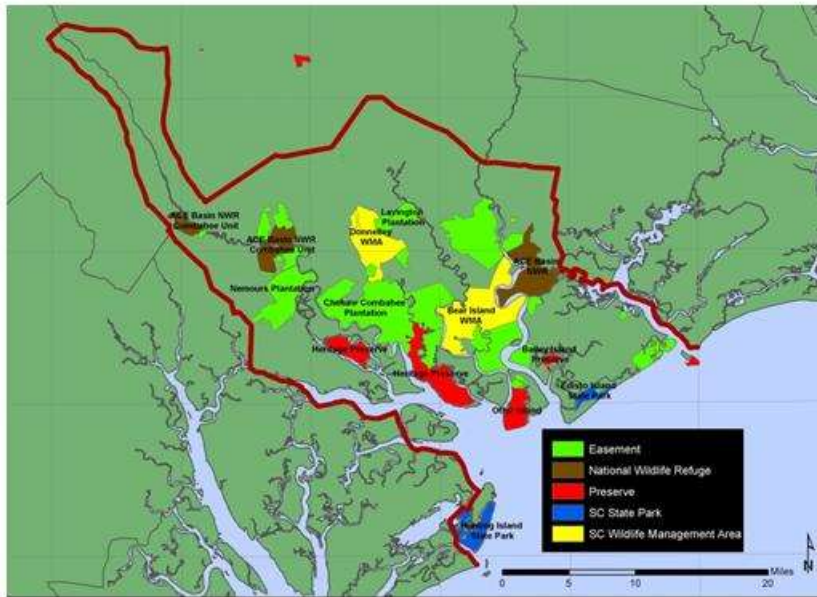


# Marine Resources Center



# Other Locations

## ACE Basin National Estuarine Research Reserve



## Waddell Mariculture Center



## Capers Island Coastal Reserve



# DNR Vessels

R/V Lady Lisa



R/V Palmetto



R/V Silver Crescent

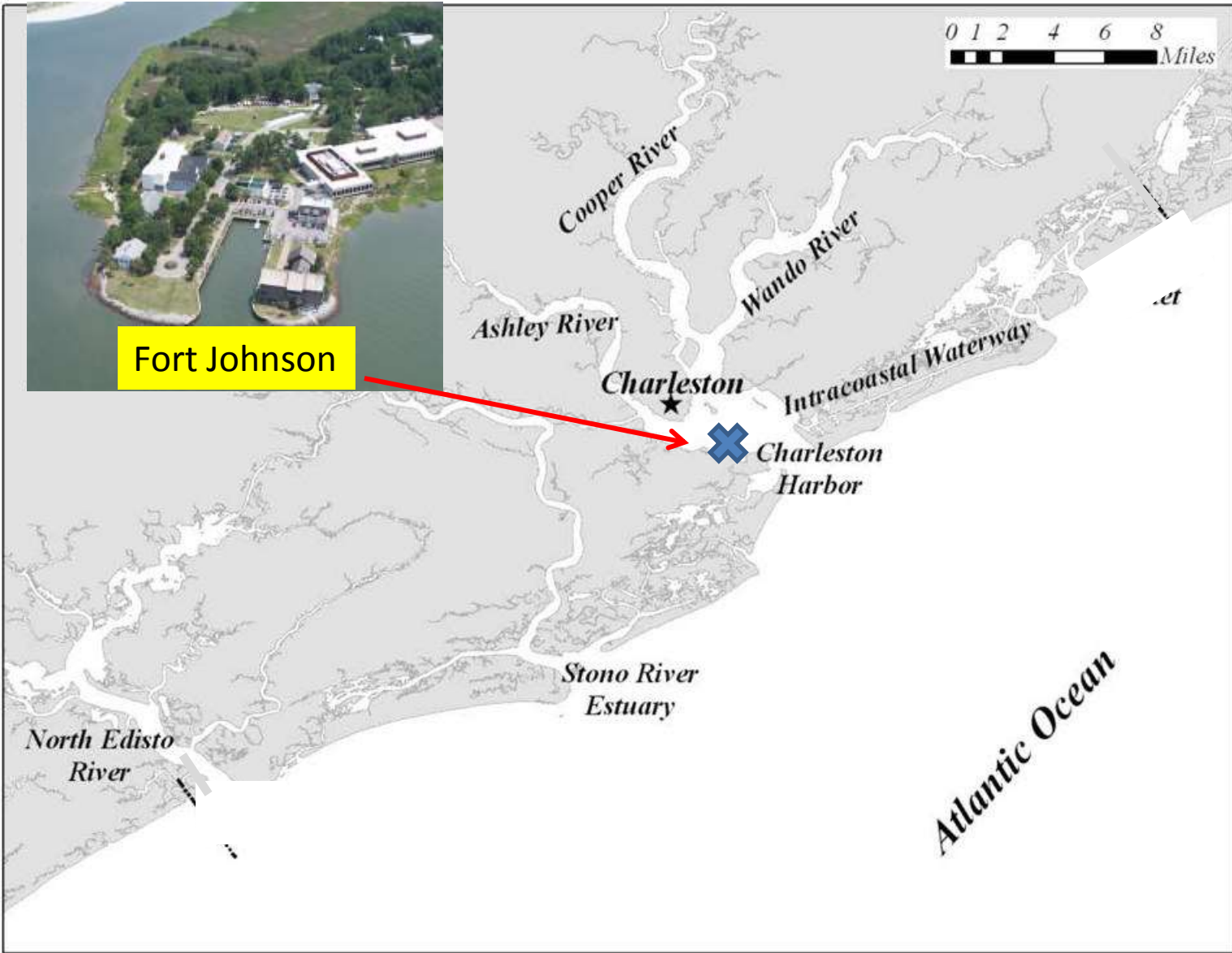


R/V Discovery



# Marine Division Activities





**DNR-MRRI**



**DNR -OFM**



**CEHBR**



**Grice- CofC**

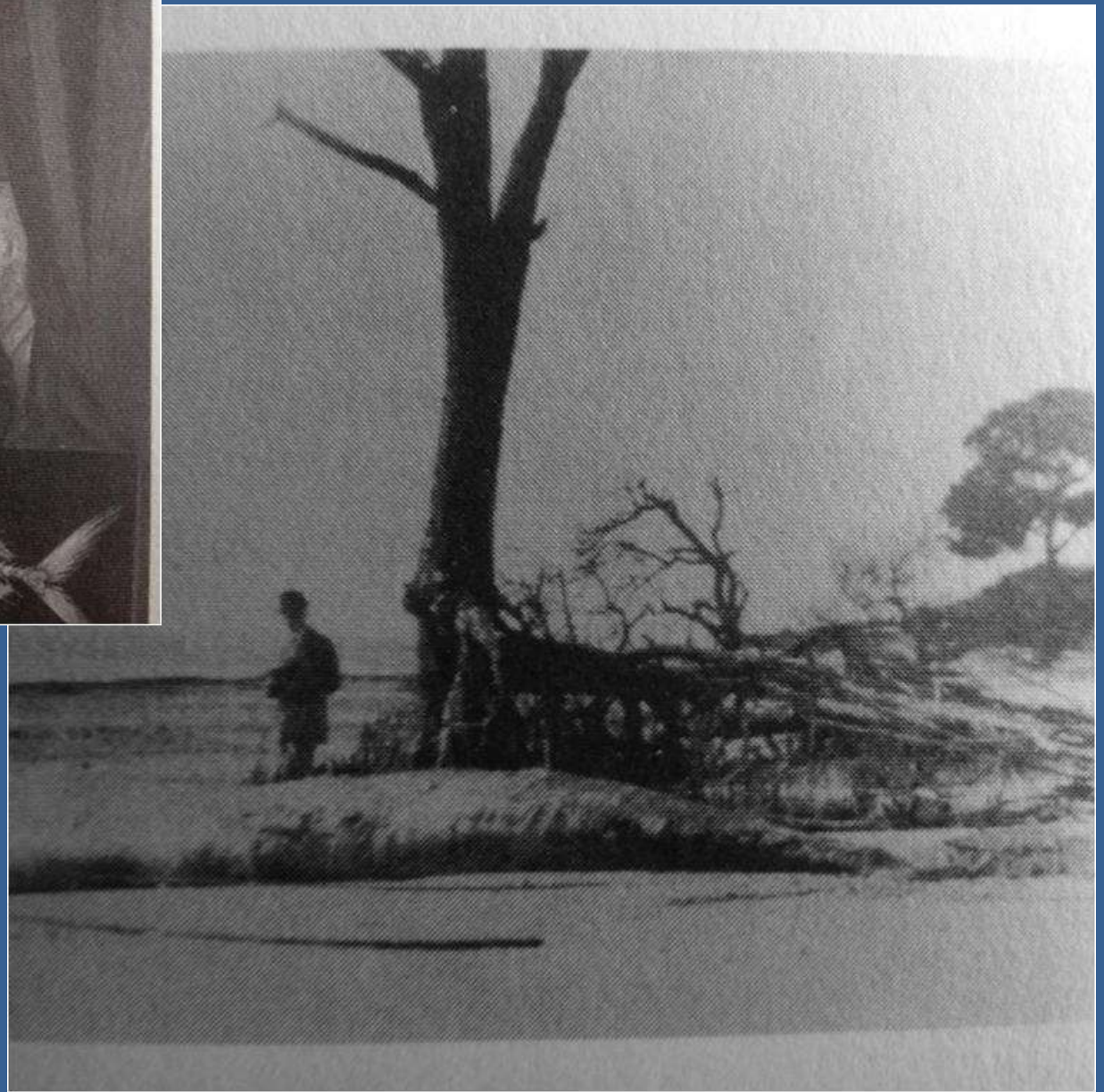
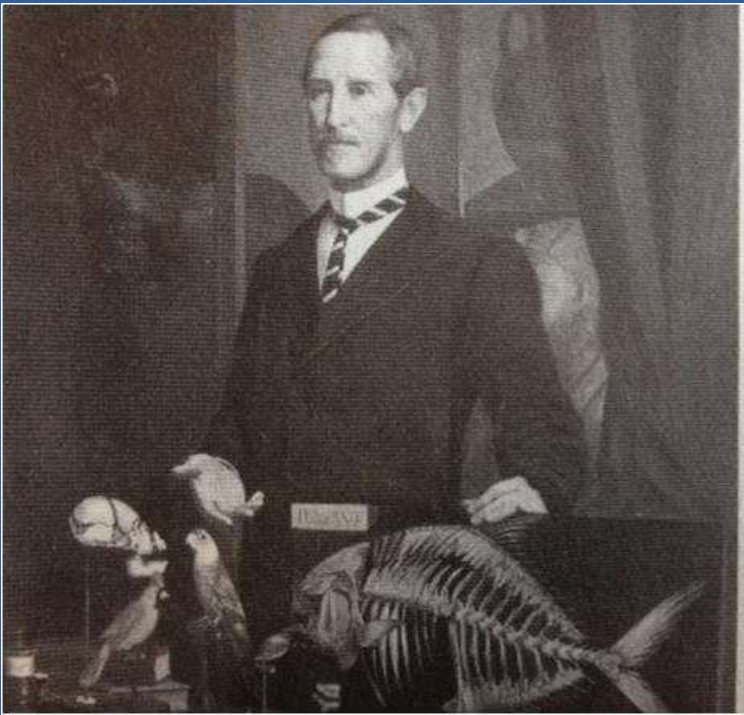


**HML**



**Fort Johnson**





**G. Manigault Beside Right Whale Carcass  
in Charleston Harbor - January 1880**





**Right Whale Skelton in Charleston Museum**

# Marine Mammal Species In South Carolina

# Atlantic Harbor Seal

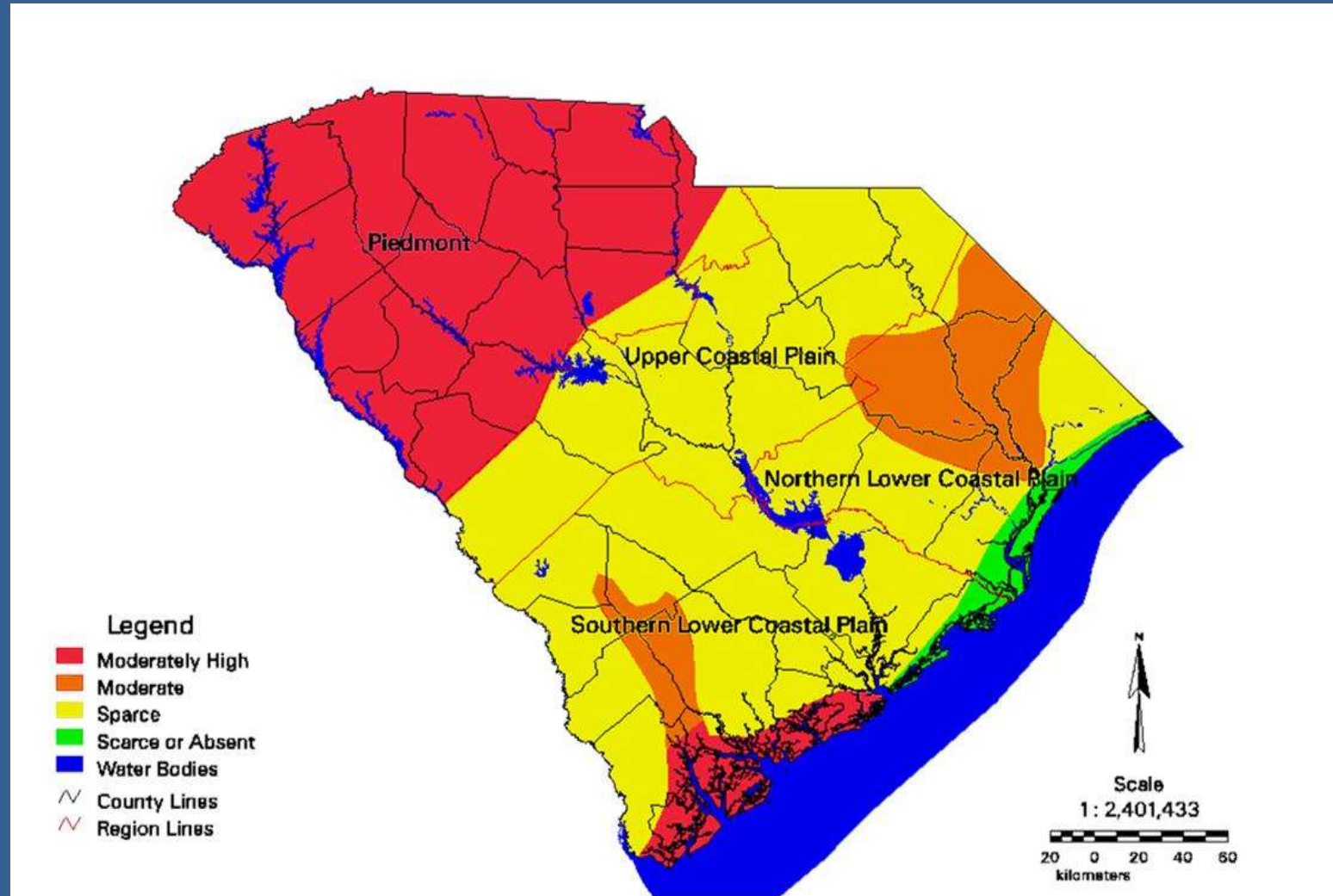


# Mink



- Contaminants  
(Methyl Mercury?)
- Roadway Mortality

# Estimated Mink Distributions and Densities in South Carolina (1999)





## Capturing Mink for Relocation





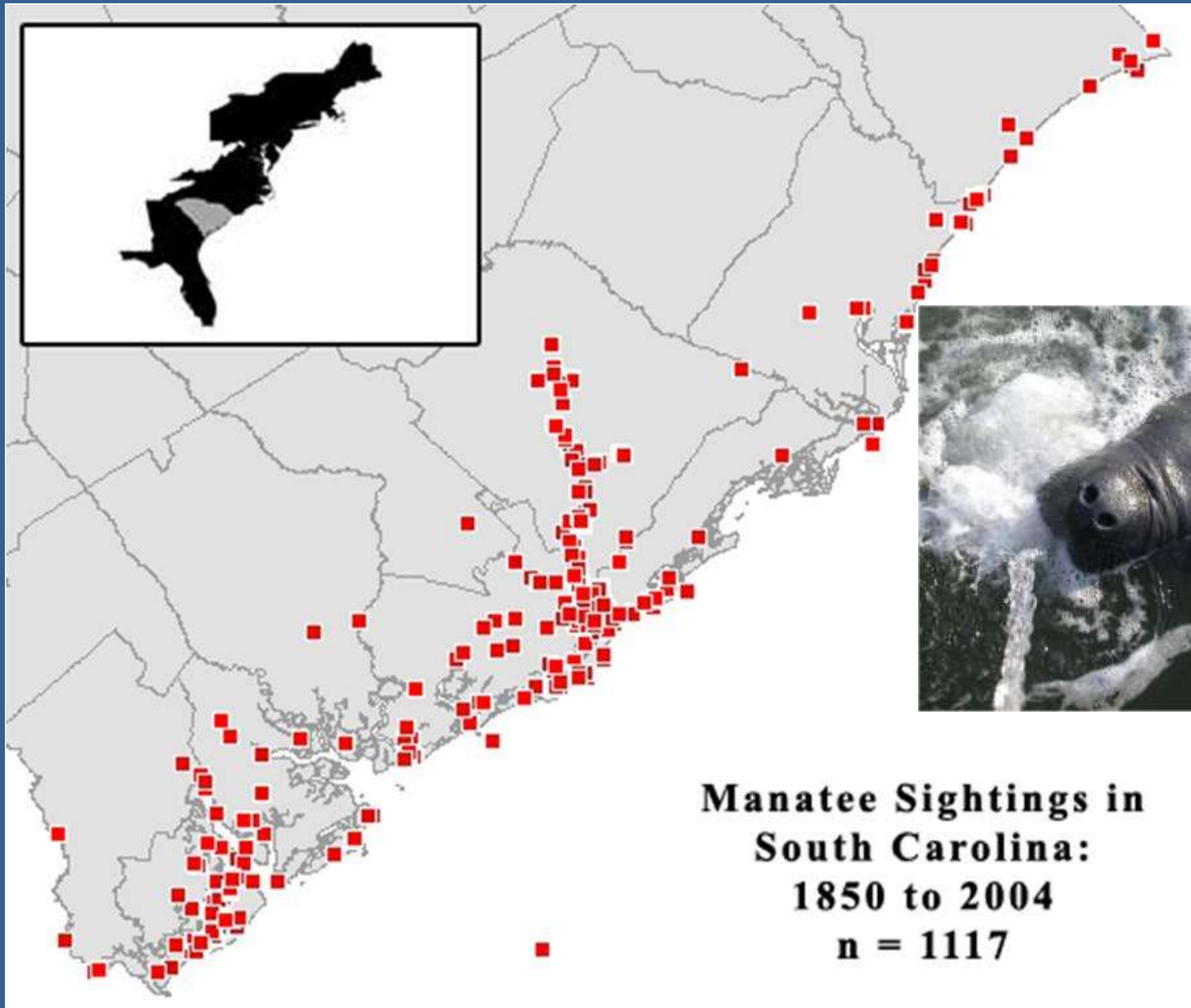
**Sea Turtle  
Nest  
Excavated by  
Mink**

# River Otter at ACE Basin Island Camp





# Florida Manatee



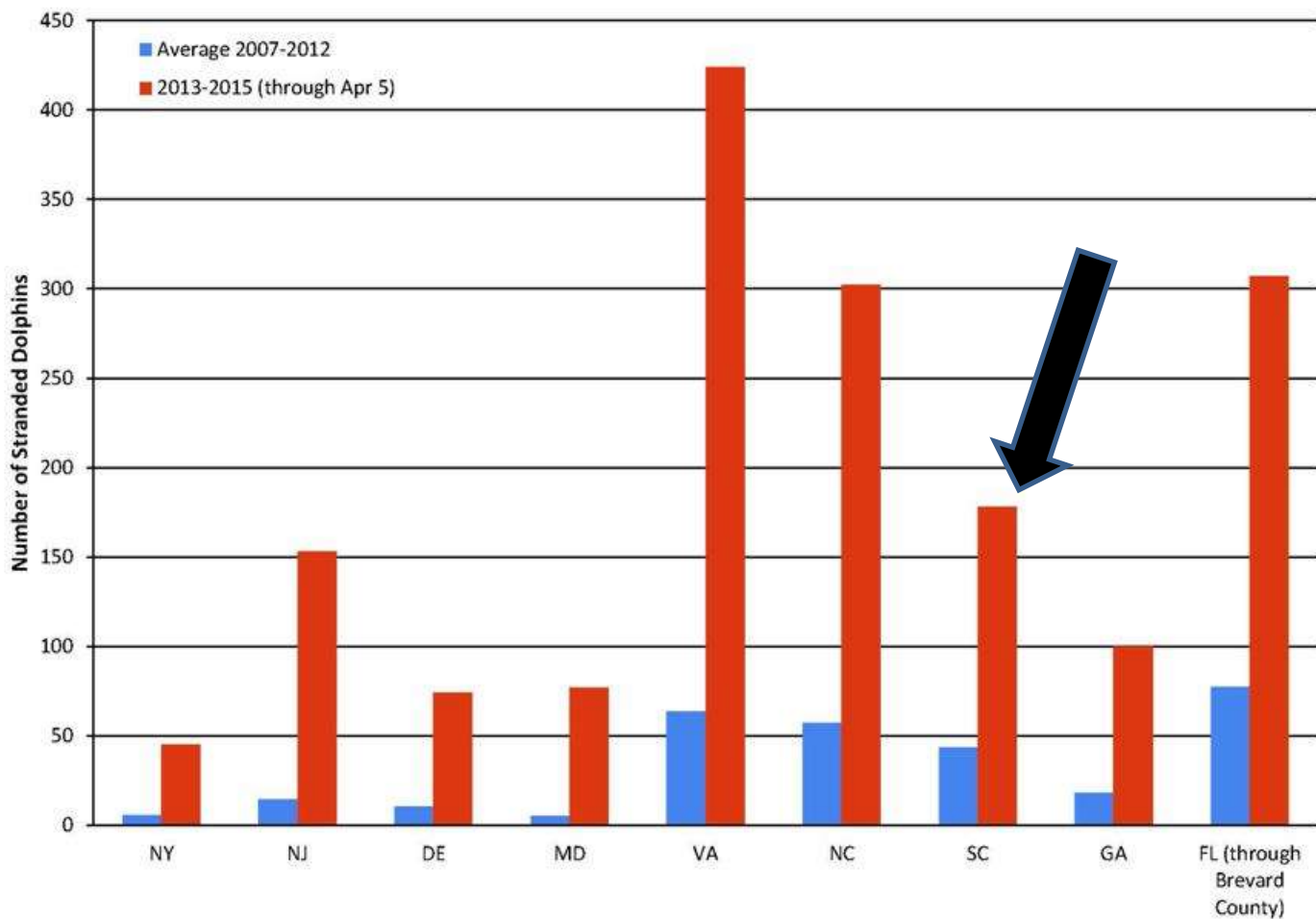
# Bottlenose Dolphin



<http://swfsc.nmfs.noaa.gov/PRD/>



**Bottlenose Dolphin Strandings (July 1, 2013 - Apr 5, 2015)**



# NOAA Dolphin Research

NOAA/NOS/CCEHBR



# NOAA Dolphin Research

NOAA/NOS/CCEHBR

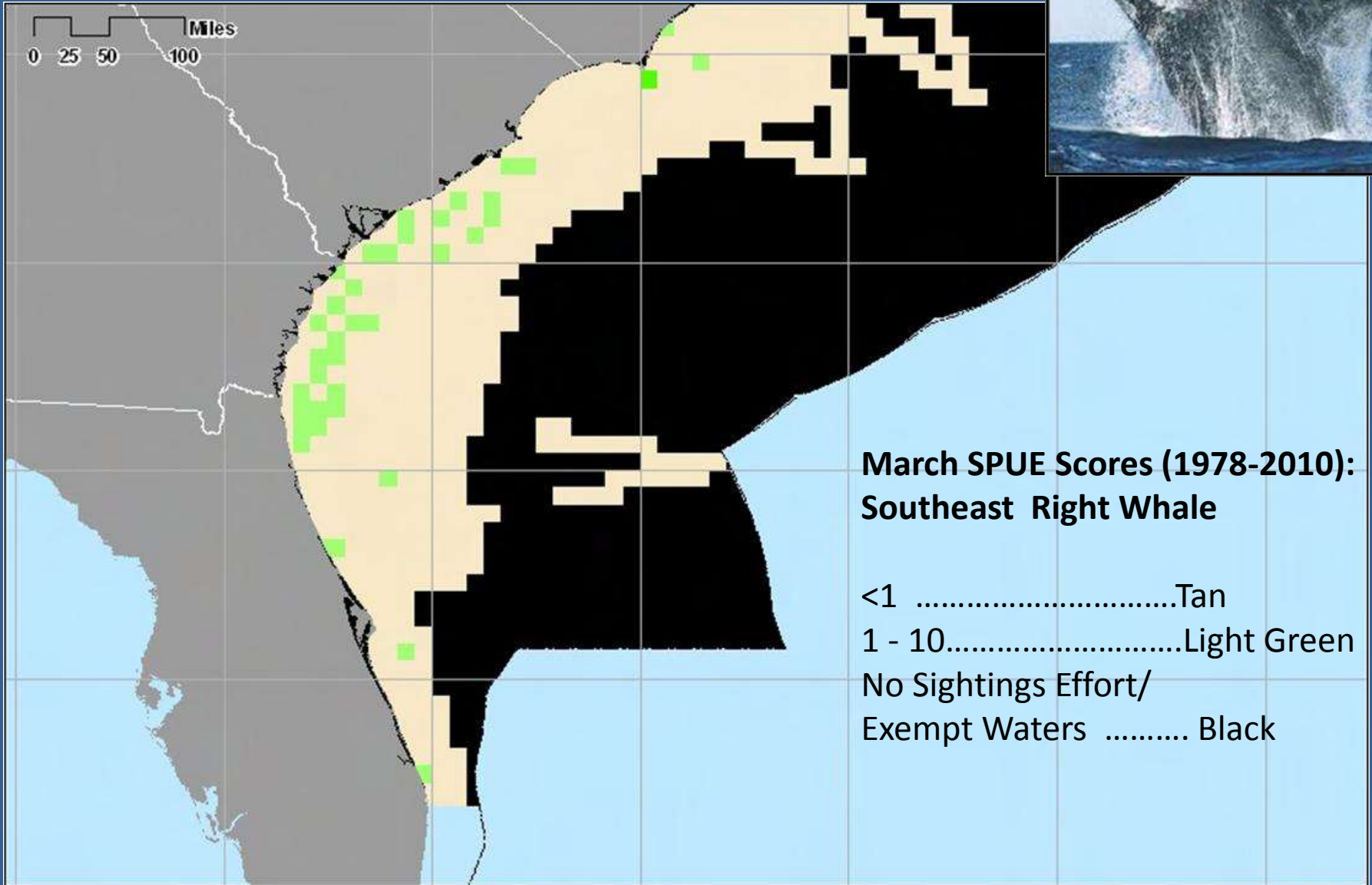
- **Bottlenose Dolphin Health & Risk Assessment Project** – screening assessment 2003–2015 in Charleston & Indian River Lagoon, FL
  - **Less than 50% Had Normal Health**
  - **Several Diseases**
  - **Perfluorinated Chemicals**
  - **PCBs**

# Crab Trap (Pot)



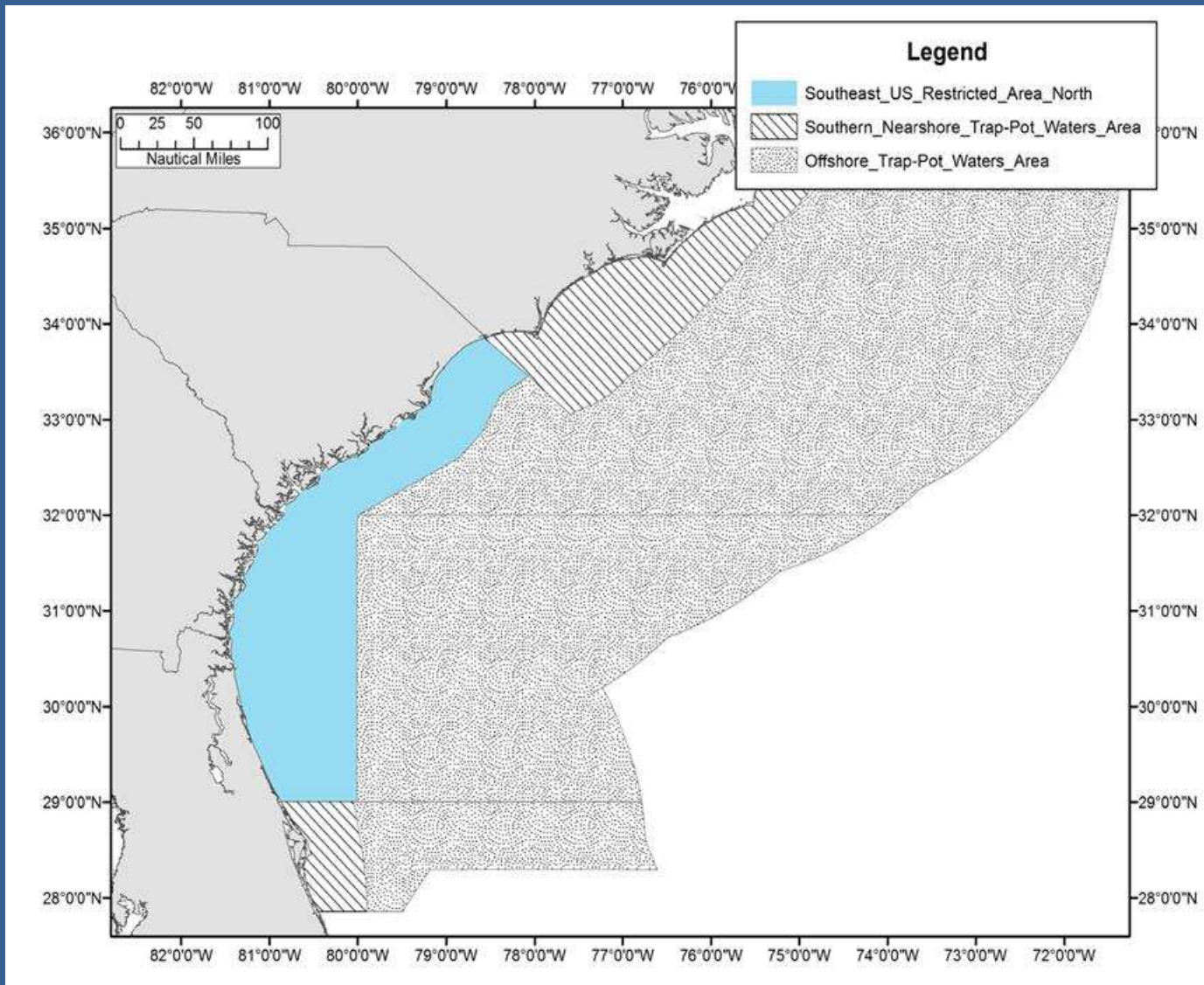


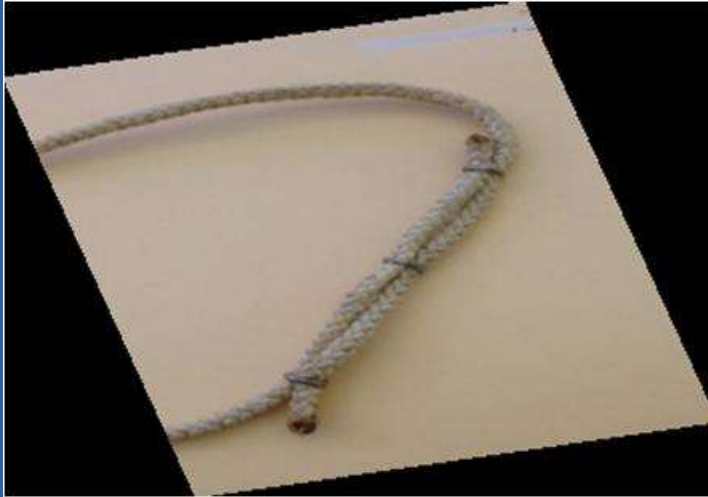
# Right Whales





# Fish Trap Rules for Right Whales





**Weak Links Required in Crab trap lines**

**Trap lines Require  
Color Coding**

