

# INDEPENDENT ADVISORY TEAM FOR MARINE MAMMAL STOCK ASSESSMENT

Paula Moreno<sup>1</sup>, André E. Punt<sup>2</sup>, Randall R. Reeves<sup>3</sup> and John R. Brandon

<sup>1</sup> Gulf Coast Research Laboratory, Univ. of Southern Mississippi, Ocean Springs, MS 39564

<sup>2</sup> University of Washington, School of Aquatic and Fishery Sciences, Seattle, WA 98105

<sup>3</sup> Okapi Wildlife Associates, Hudson, QC, Canada



## Background

- SCeMFIS belongs to the National Science Foundation's Industry & University Cooperative Research Center program: [www.nsf.gov/eng/iip/iucrc/](http://www.nsf.gov/eng/iip/iucrc/)
- The I/UCRC program is more than 40 years old, with ~70 research centers
- SCeMFIS is the first center dedicated to fishery sciences (est. 2013)
- SCeMFIS members include: commercial seafood companies; NEFSC (NMFS); Virginia Institute of Mar. Sci., and; the University of Southern Mississippi
- Current research projects cover: shellfish (e.g. surfclams and ocean quahogs), finfish (e.g. summer flounder, scup) and marine mammals
- The IAT is the center's research group for marine mammal assessment

## Goal

- Develop analytical approaches to reduce uncertainty in marine mammal stock assessment and ensure that management objectives of the MMPA are met

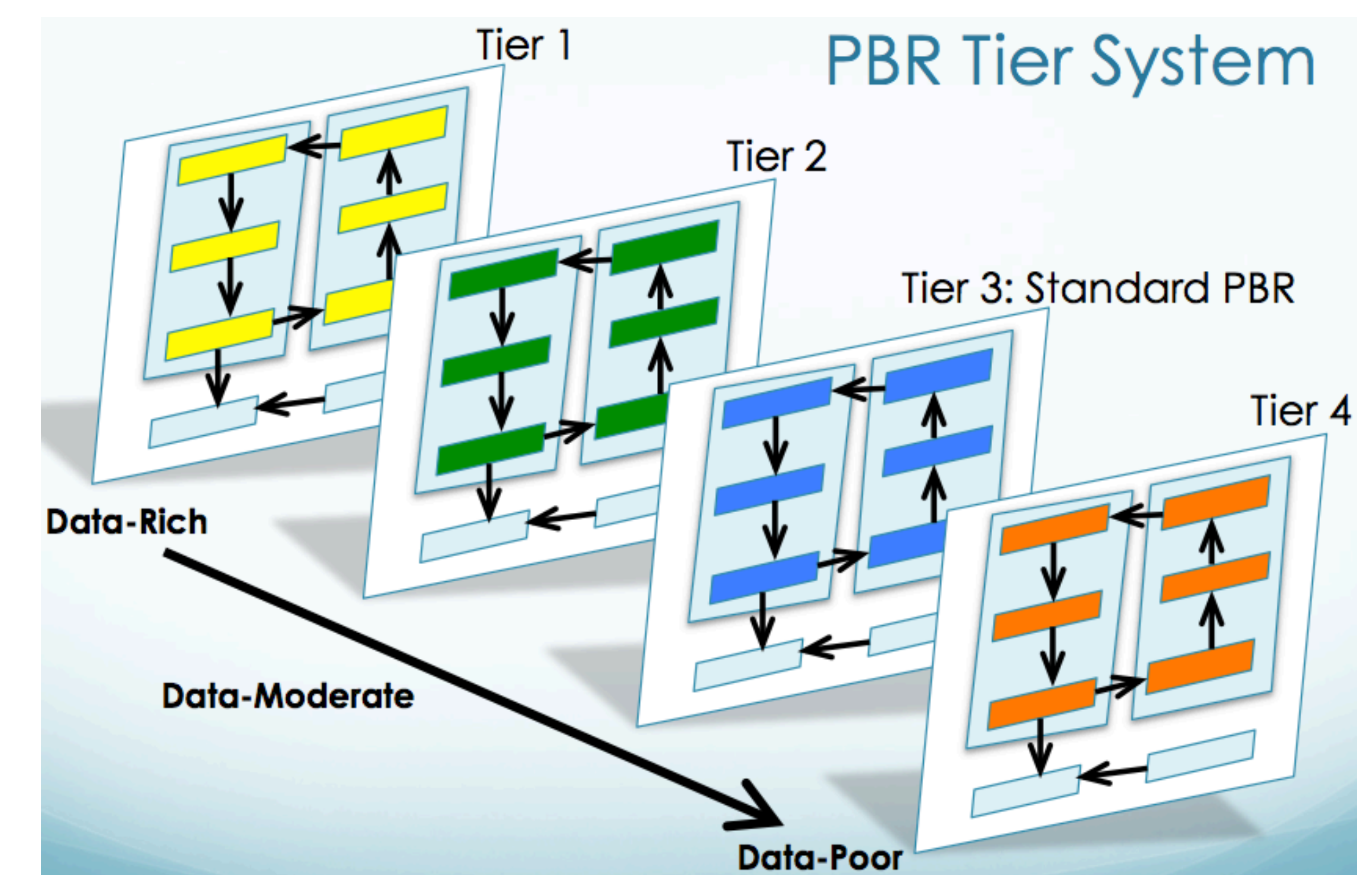
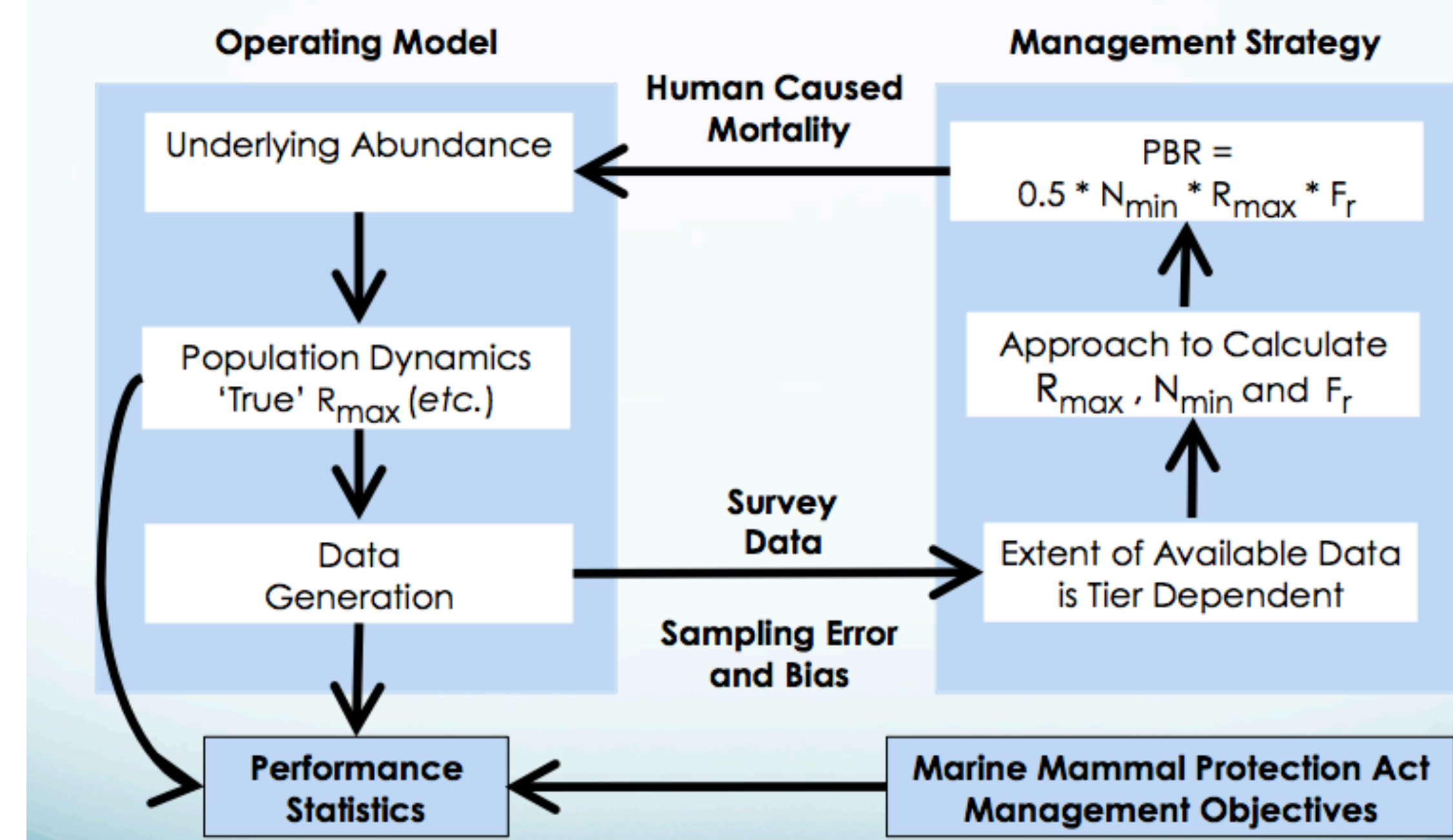
## Methods of Reaching the Goal

- Find new ways to incorporate existing, but currently unused, data in stock assessments
- Evaluate and improve data collection strategies to achieve tighter links with assessment needs
- Collaborate with agency scientists and industry experts to enhance effectiveness of our research

## Management Strategy Evaluation (MSE) for a PBR Tier System

- Each tier to correspond to a different type of data set (e.g. a set with a single abundance estimate vs. a set with multiple estimates)
- Performance of alternative approaches for calculating PBR to be tested through computer simulation
- *Example:*  $N_{min}$  to be derived for a data-rich tier by averaging multiple abundance estimates (with variances)
- Different approaches to be applied and assessed separately within each tier
- System performance to be evaluated against MMPA management objectives

## Structure of the MSE for a Tier System



**Acknowledgements:** We are thankful to the funding support of SCeMFIS, NSF and the Western Pacific Fisheries Management Council

