

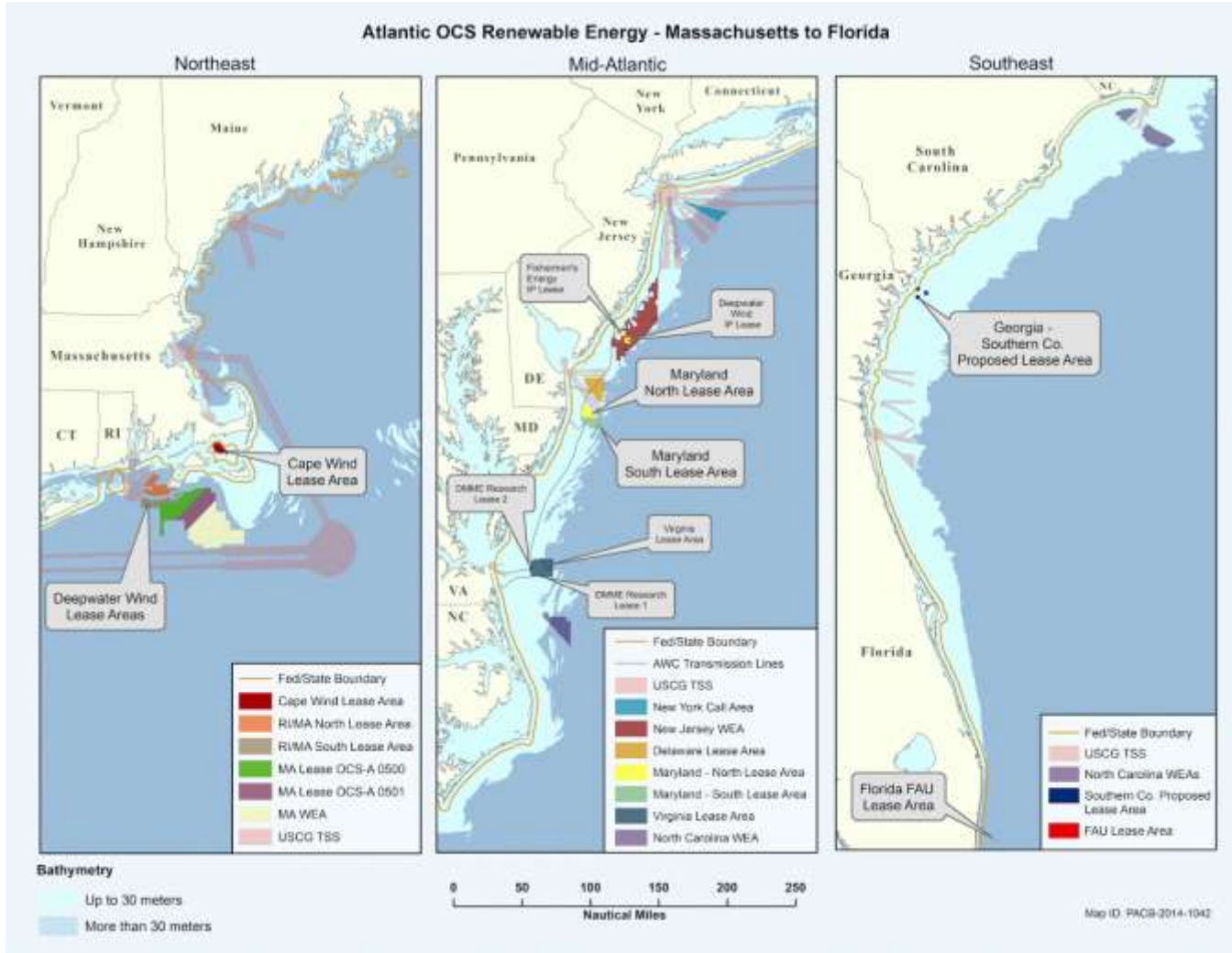
Offshore Renewable Energy Activities and Relevant Environmental Studies



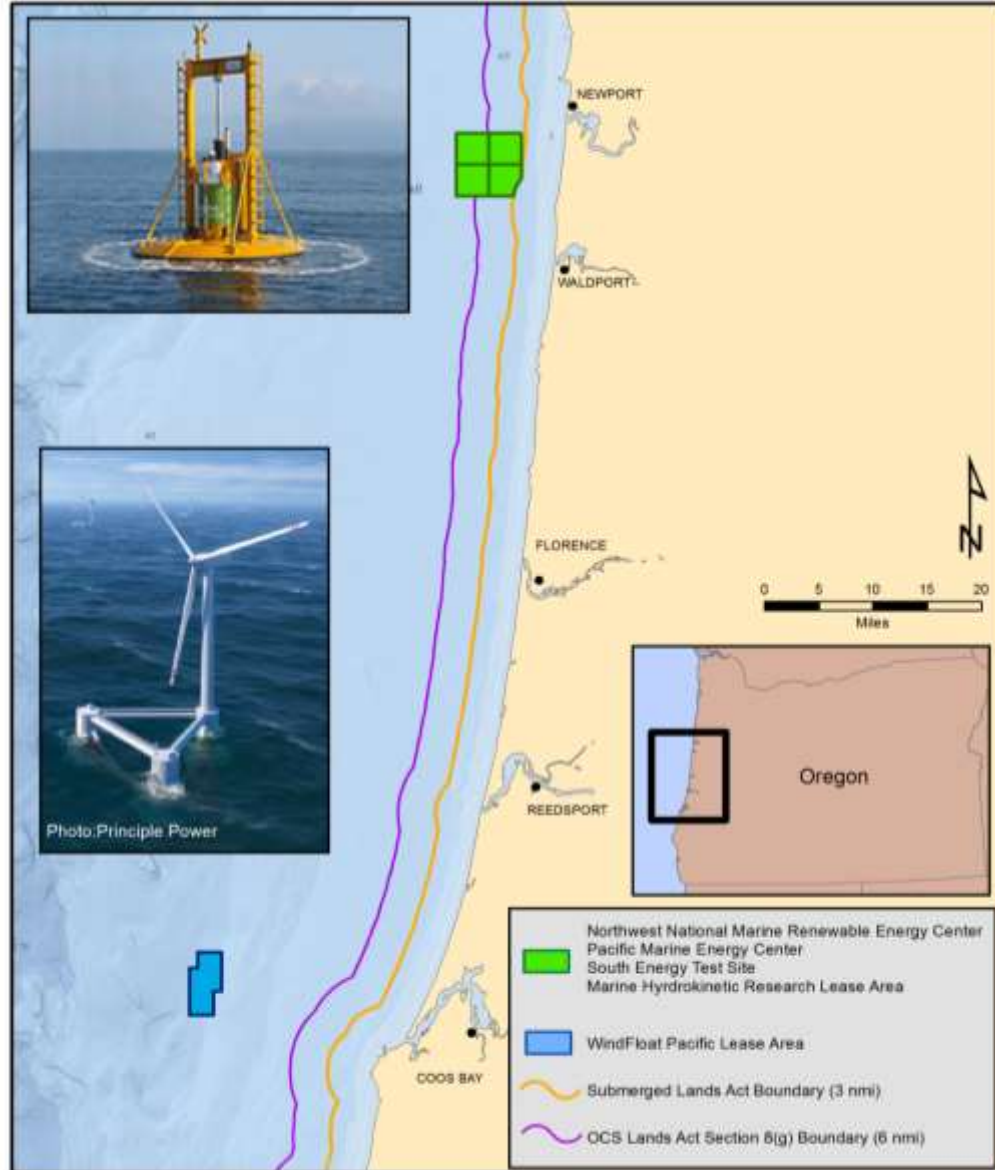
Walter Cruickshank
Deputy Director
Bureau of Ocean Energy Management

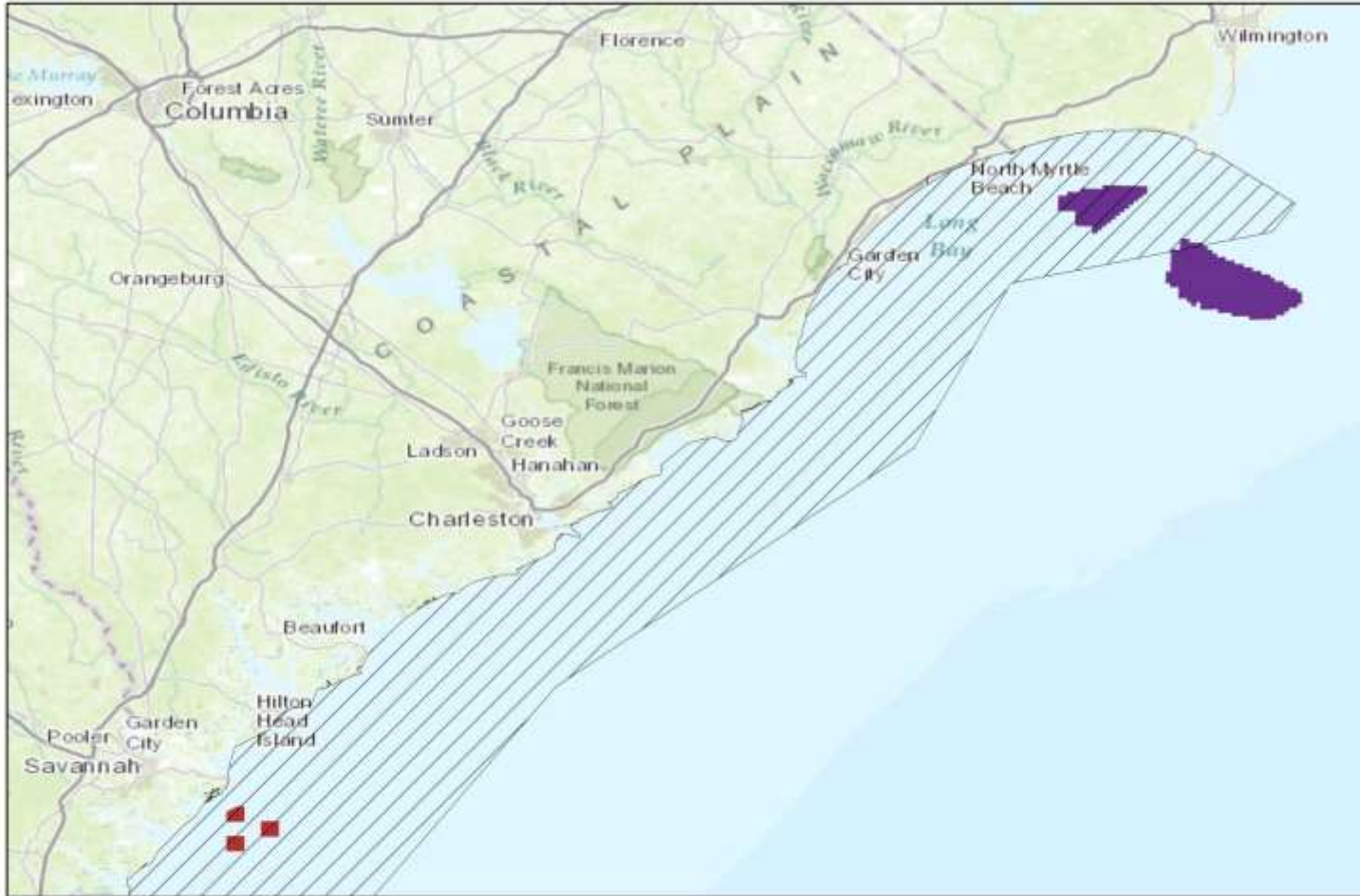
May 6, 2015





Pacific OCS Renewable Energy -- Oregon








U.S. Department of the Interior
Bureau of Ocean Energy Management
Office of Renewable Energy Programs



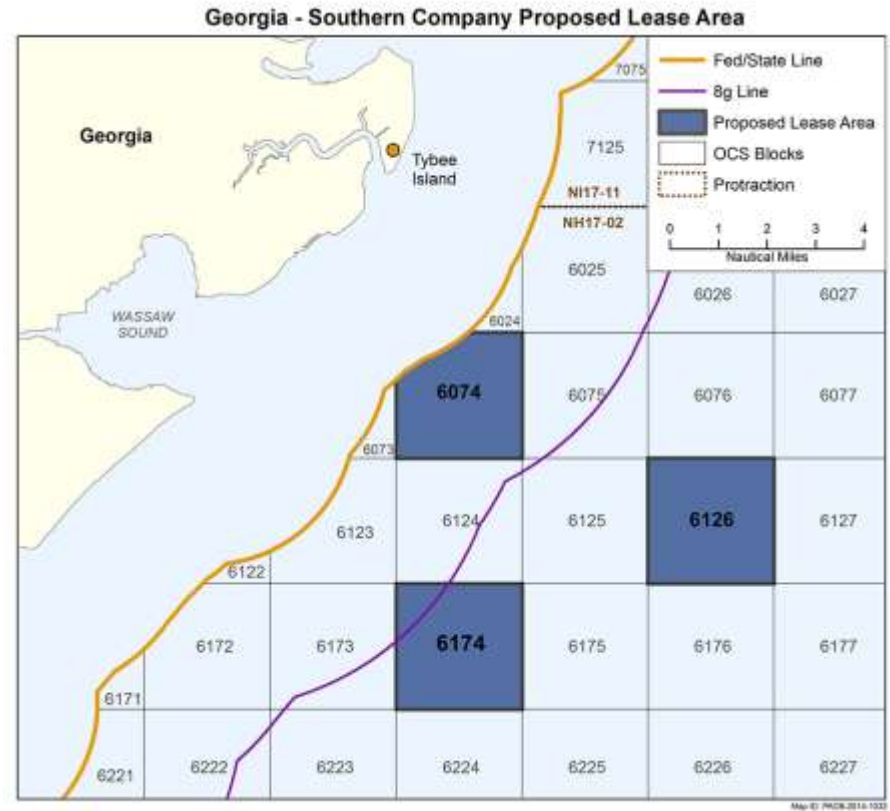
Right Whale Proposed Critical Habitat



-  Right Whale Proposed Critical Habitat
-  Georgia Proposed IP Lease
-  North Carolina WEA



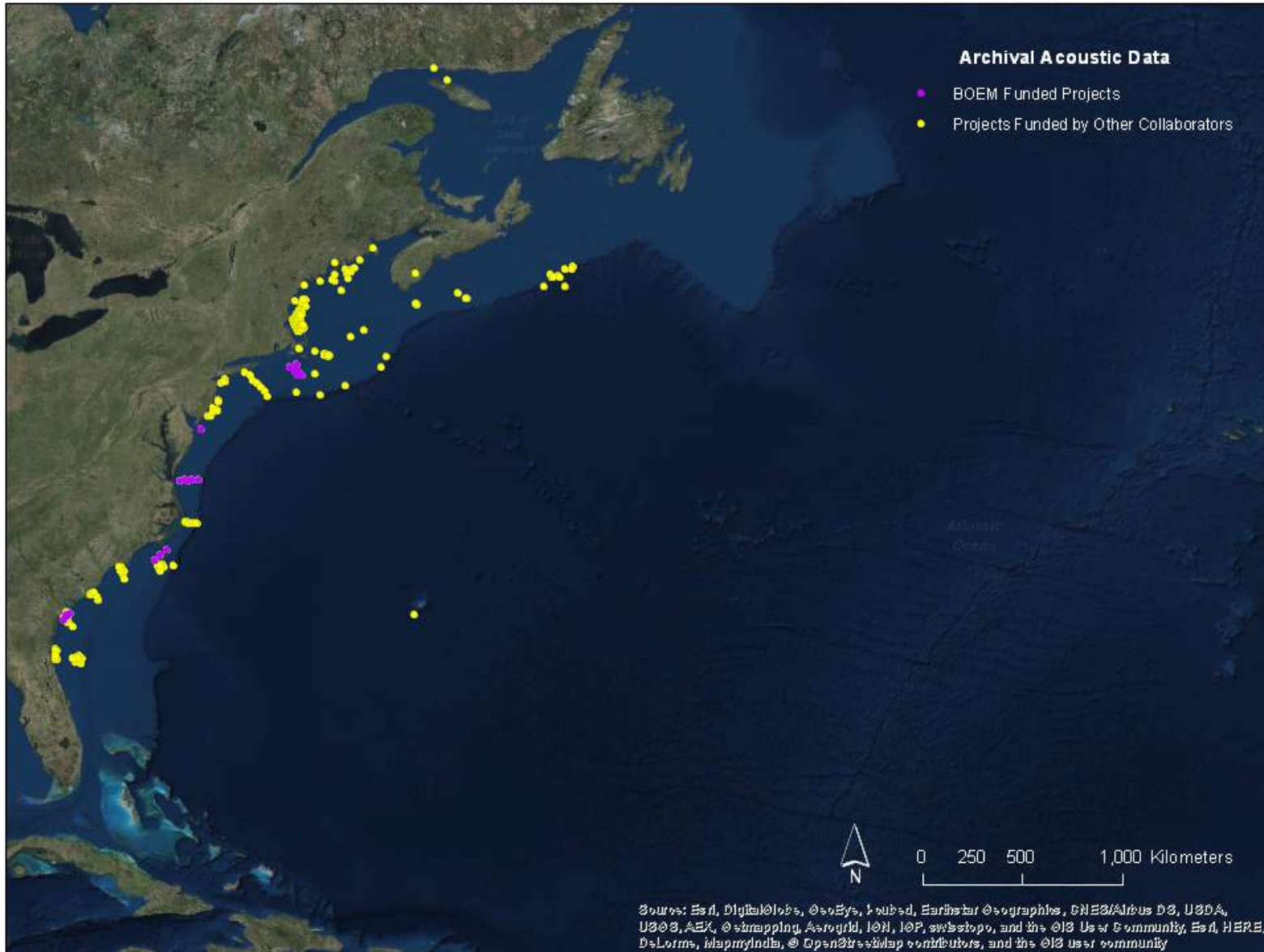
- Southern Company
- 5-year lease term
- Meteorological tower and/or buoys
- Environmental Assessment includes standard operating conditions
- Pile driving prohibited November 1 – April 30
- ESA consultation with NMFS ongoing



- Atlantic Marine Assessment Program for Protected Species (AMAPPS)
 - BOEM, NOAA, FWS, and Navy partnership
- Field Surveys and Marine Resource Characterization for Offshore Wind Energy Planning in the Massachusetts Wind Energy Area
- Passive Acoustic Monitoring – several planned ongoing and completed studies



Passive Acoustic Monitoring Data



<http://www.boem.gov/Renewable-Energy/>

<http://www.boem.gov/Studies/>

