



US Coast Guard
Living Marine Resources



Marine Mammal Commission

2014 Annual Meeting

Legacy of Involvement with Marine Mammals

THE SYLVIA HANDY, 143 U. S. 513 (1892)

U.S. Supreme Court

The Sylvia Handy, 143 U.S. 513 (1892)

The Sylvia Handy

No. 58

Argued November 11, 1891

Decided February 29, 1892

143 U.S. 513

APPEAL FROM THE DISTRICT COURT OF THE

UNITED STATES FOR THE DISTRICT OF ALASKA

Syllabus

As the bill of exceptions does not purport to contain all the evidence, and as no request was made for a finding of fact as to the actual fact of the killing of the seals and the seizure of the vessel, the rulings in *Ex parte Cooper*, ante, [143 U. S. 472](#), are decisive of this case, and it is followed.

XXXIX.—SUGGESTIONS TO THE KEEPERS OF THE U. S. LIFE-SAVING STATIONS, LIGHT-HOUSES, AND LIGHT-SHIPS, AND TO OTHER OBSERVERS, RELATIVE TO THE BEST MEANS OF COLLECTING AND PRESERVING SPECIMENS OF WHALES AND PORPOISES.

BY FREDERICK W. TRUE,
Curator of Mammals in the U. S. National Museum.

ANALYSIS.

Pace



U.S. Coast Guard: 11 Statutory Missions

The Coast Guard's motto is *Semper Paratus*, meaning "Always Ready."

Missions

By law, the Coast Guard has 11 missions:

- Ports, waterways, and coastal security
- Drug interdiction
- Aids to navigation
- Search and rescue
- Living marine resources
- Marine safety
- Defense readiness
- Migrant interdiction
- Marine environmental protection
- Ice operations
- Other law enforcement

(listed in order of percentage of operating expenses)

Thus, we are **military, multi-mission, and maritime.**



Dept. of Homeland Security: Five Core Missions



The Core Missions

There are five homeland security missions:

1. [Prevent terrorism and enhancing security;](#)
2. [Secure and manage our borders;](#)
3. [Enforce and administer our immigration laws;](#)
4. [Safeguard and secure cyberspace;](#)
5. [Ensure resilience to disasters;](#)

In addition, we must specifically focus on [maturing and strengthening the homeland security enterprise](#) itself.

More on the DHS mission can be found in the [Quadrennial Homeland Security Review \(QHSR\)](#)



Seal identification may be context dependent:

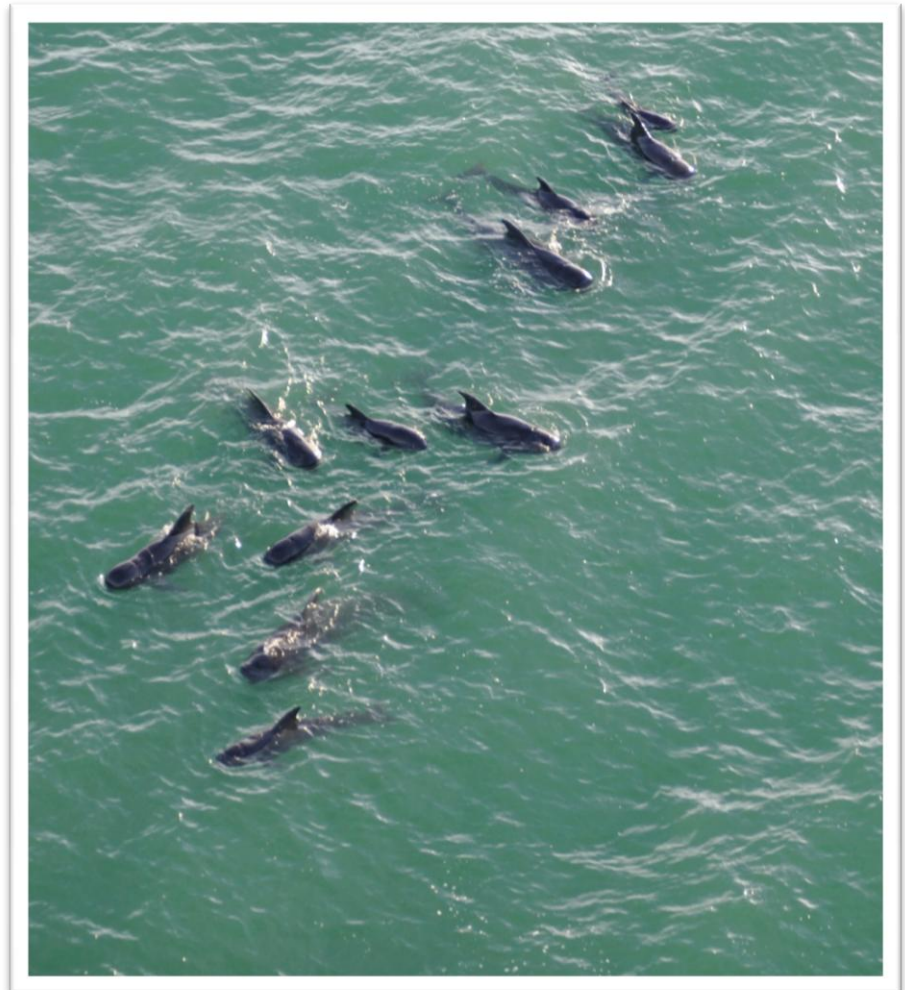
CG LMR, MER, etc.



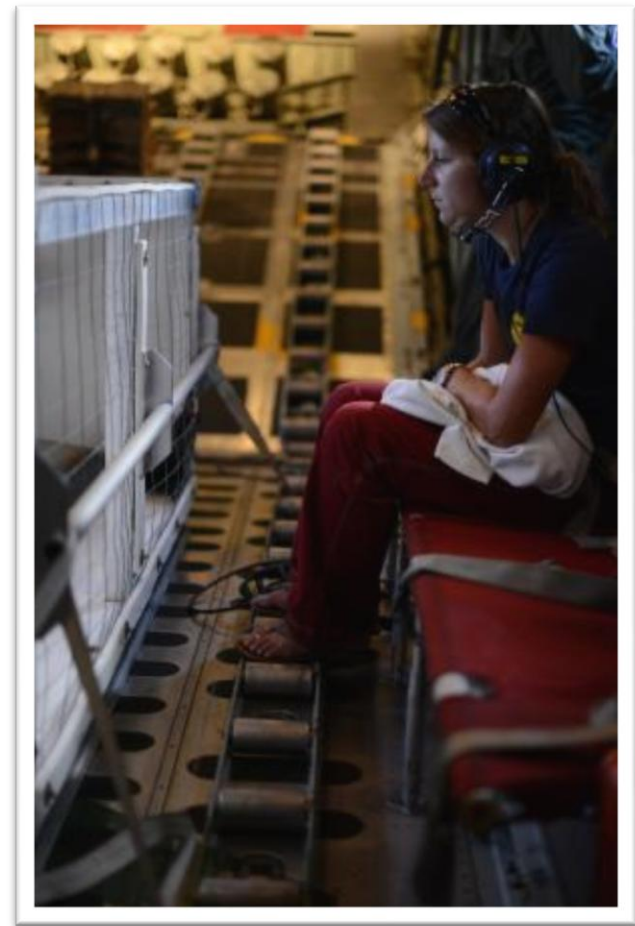
CG MSR, DOD, etc.



Ocean Steward: Conservation Program



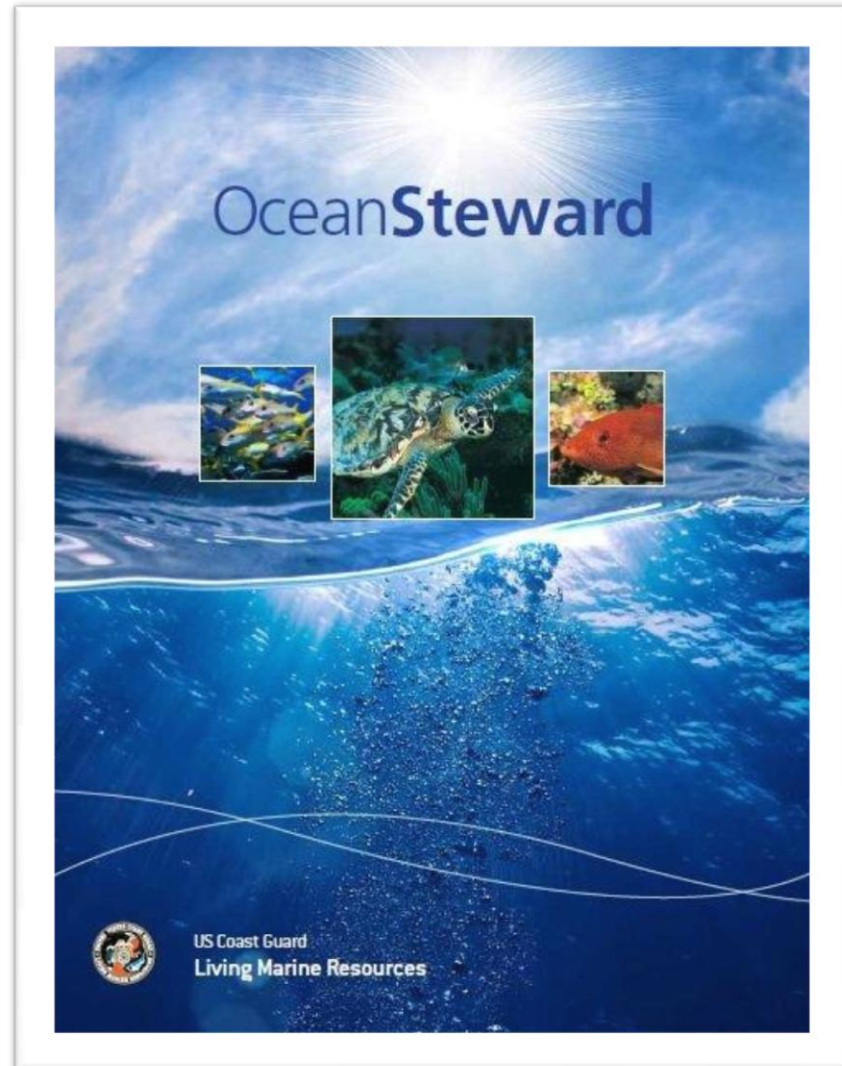
Ocean Steward: Conservation Program



DEFINING & MEASURING SUCCESS

Challenges:

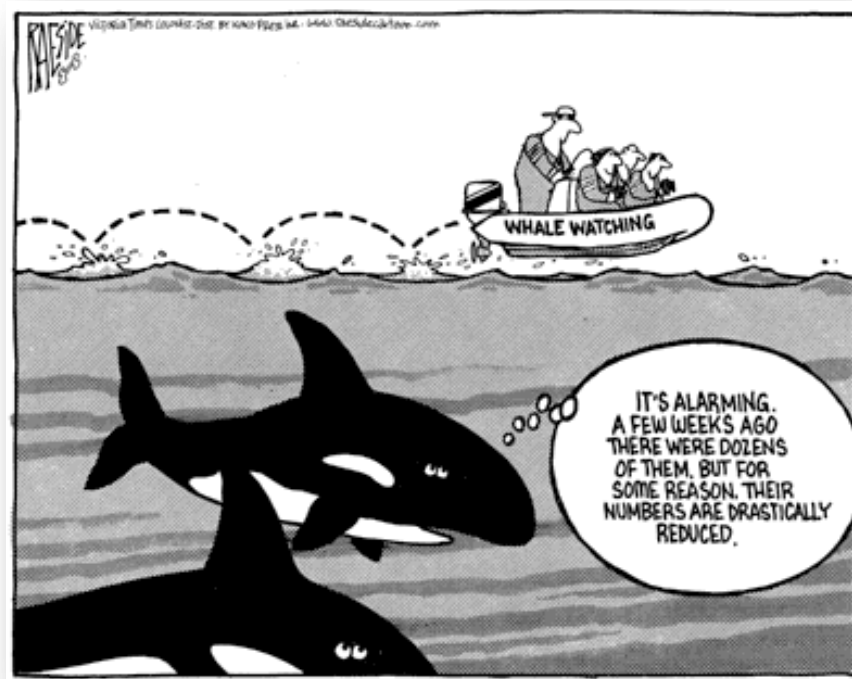
- IDENTIFYING MEANINGFUL MEASURES FOR EPISODIC EVENTS;
- MAINTAINING PROFICIENCY AMONG PERSONNEL FOCUSED ON DIFFERENT SPECIALTIES;
- MAINTAINING CONSISTENCY IN POSTURE, MESSAGING AND COLLECTION OF DATA/RESULTS.



Ocean Steward: Enforcement Program

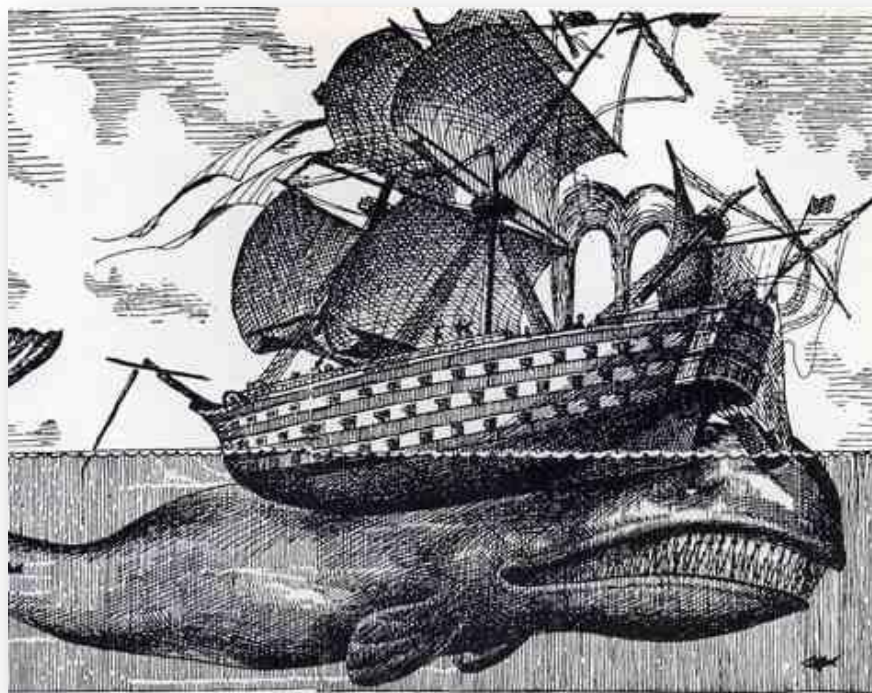
Challenges:

- Interactions and takes are often inadvertent, and therefore difficult to anticipate.
- Some takes permitted, some regs challenging to enforce at sea.
- Tyranny of Distance: deliberate violations are dispersed across vast areas.
- Interdiction v. investigatory approaches.



Ocean Steward: Internal Program

- Training delivery
 - RFTCs
 - Lookouts, Execs
- District Protected Living Marine Resource Plans
- Consultations, permits.



Marine Mammals: Successes

- Operation Kohola Guardian, NW Hawaiian Islands Humpback Whale Sanctuary.
- Supporting Monk Seal Management.
- Manatee speed zones.
- Industry development of whale watch guidelines.
- Multi-agency approach to mitigate risk of whale strikes.
- Stellar sea lion haulouts.



Potential Tools and Fixes?

- Common Operating Picture for authoritative marine mammal data.
- Dissemination of modelling and spatial planning tools that anticipate risk based on available data.
- Demand signal articulating expectations for Coast Guard support and involvement.





US Coast Guard Living Marine Resources

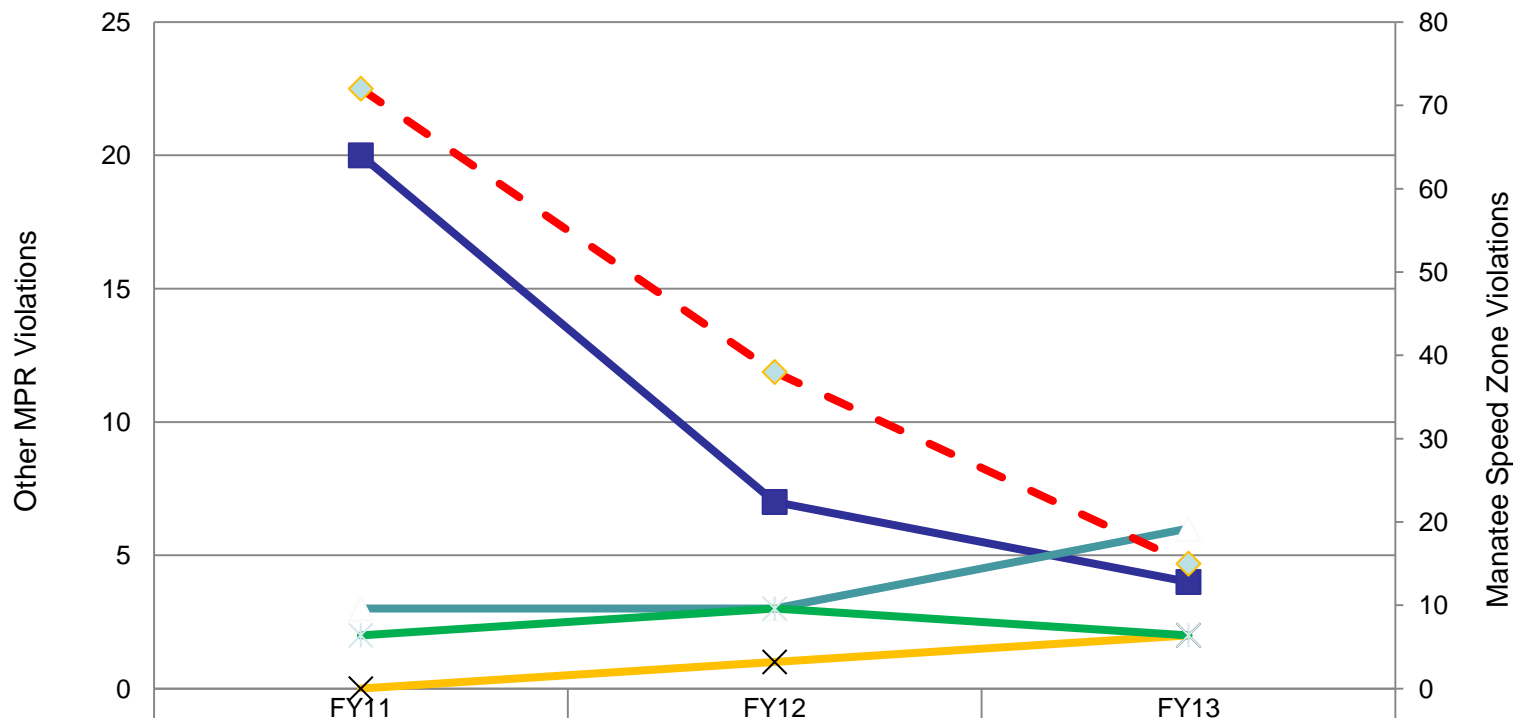


Thank you!

Steven M. Tucker
Steven.M.Tucker@uscg.mil

USCG Marine Protected Resources Enforcement

MPR Enforcement Activities FY11-FY13



Right Whale Speed Zone	20	7	4
Harassment/Takes	3	3	6
NMS	0	1	2
Closed Zones	2	3	2
Manatee Speed Zone	72	38	15



CHALLENGE: WHALES AND VESSELS

- Panama Canal Expansion, shifting trade patterns.
- Petitions for increased habitat declarations.
- Ad-hoc approach, site and species specific.
- SMAs, DMAs, ATBAs, MSRs, PSSAs, TSSs, under ESA, MMPA, PWSA (NMSA)
- Atlantic coast and Ports, West Coast, Northern latitudes.
- *Nature of the maritime trades, benefits of standardization.*

